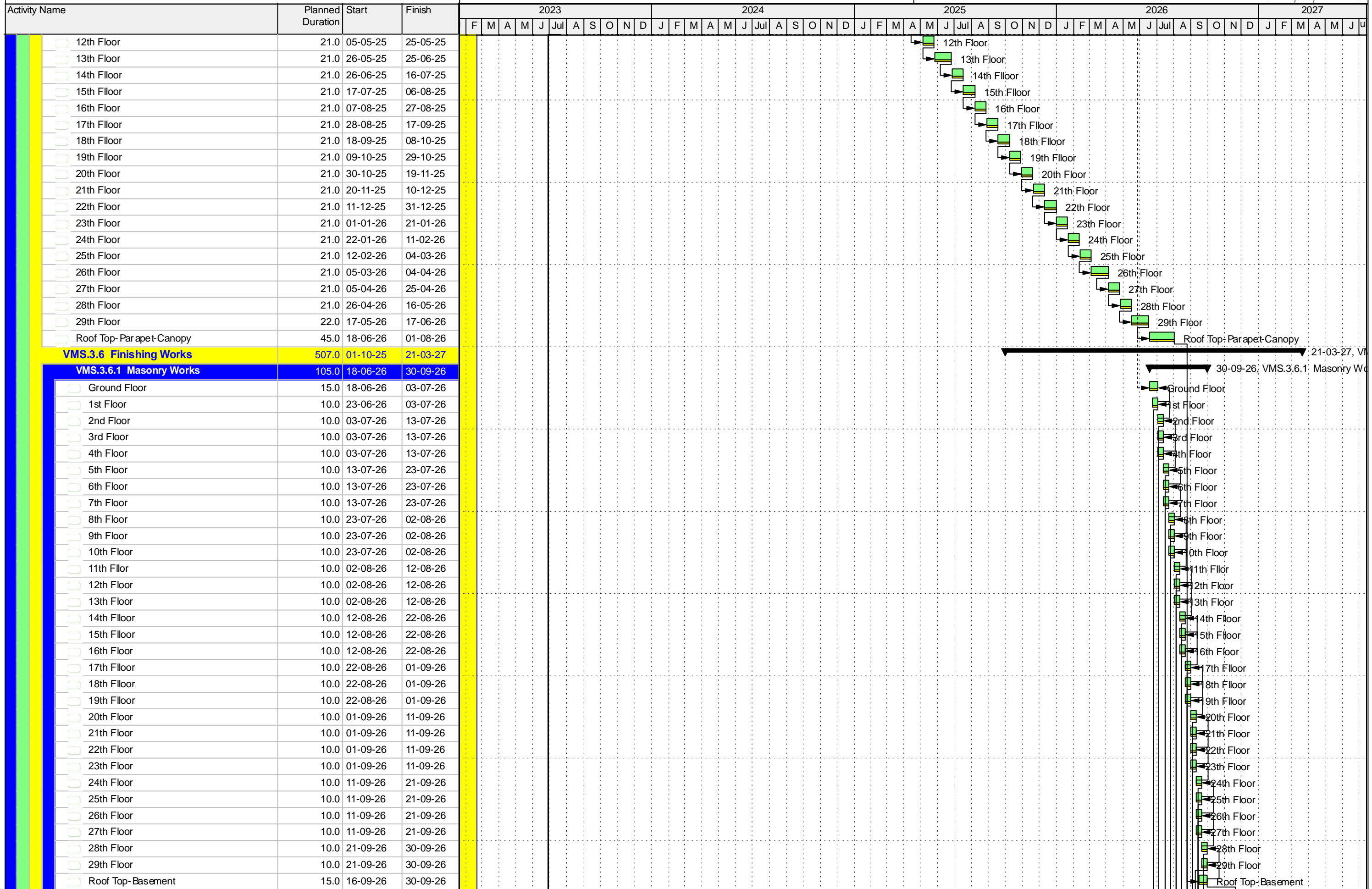
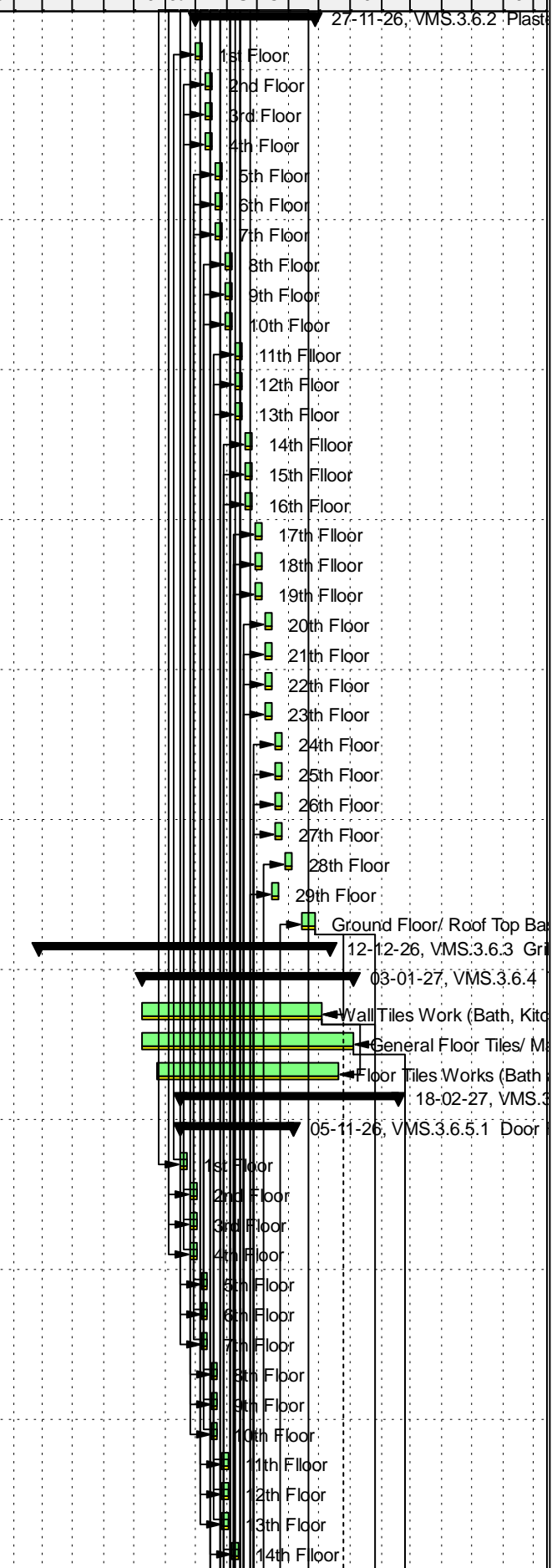


█ Actual Level of Effort
 █ Actual Work
 █ Critical Remaining Work
 Primary Baseline
 Remaining Work
 ◆ Milestone



█ Actual Level of Effort
 █ Actual Work
 █ Critical Remaining Work
█ Primary Baseline
 █ Remaining Work
 ◆ Milestone

Activity Name	Planned Duration	Start	Finish	2023												2024												2025												2026												2027											
				F	M	A	M	J	Jul	A	S	O	N	D	J	F	M	A	M	J	Jul	A	S	O	N	D	J	F	M	A	M	J	Jul	A	S	O	N	D	J	F	M	A	M	J	Jul	A	S	O	N	D	J	F	M	A	M	J	Jul	A	S	O	N	D	
VMS.3.6.2 Plaster Work	120.0	31-07-26	27-11-26																																																												
1st Floor	7.0	31-07-26	06-08-26																																																												
2nd Floor	7.0	10-08-26	16-08-26																																																												
3rd Floor	7.0	10-08-26	16-08-26																																																												
4th Floor	7.0	10-08-26	16-08-26																																																												
5th Floor	7.0	20-08-26	26-08-26																																																												
6th Floor	7.0	20-08-26	26-08-26																																																												
7th Floor	7.0	20-08-26	26-08-26																																																												
8th Floor	7.0	30-08-26	05-09-26																																																												
9th Floor	7.0	30-08-26	05-09-26																																																												
10th Floor	7.0	30-08-26	05-09-26																																																												
11th Floor	7.0	09-09-26	15-09-26																																																												
12th Floor	7.0	09-09-26	15-09-26																																																												
13th Floor	7.0	09-09-26	15-09-26																																																												
14th Floor	7.0	19-09-26	25-09-26																																																												
15th Floor	7.0	19-09-26	25-09-26																																																												
16th Floor	7.0	19-09-26	25-09-26																																																												
17th Floor	7.0	29-09-26	05-10-26																																																												
18th Floor	7.0	29-09-26	05-10-26																																																												
19th Floor	7.0	29-09-26	05-10-26																																																												
20th Floor	7.0	09-10-26	15-10-26																																																												
21th Floor	7.0	09-10-26	15-10-26																																																												
22th Floor	7.0	09-10-26	15-10-26																																																												
23th Floor	7.0	09-10-26	15-10-26																																																												
24th Floor	7.0	19-10-26	25-10-26																																																												
25th Floor	7.0	19-10-26	25-10-26																																																												
26th Floor	7.0	19-10-26	25-10-26																																																												
27th Floor	7.0	19-10-26	25-10-26																																																												
28th Floor	7.0	29-10-26	04-11-26																																																												
29th Floor	7.0	15-10-26	21-10-26																																																												
Ground Floor/ Roof Top Basement	15.0	13-11-26	27-11-26																																																												
VMS.3.6.3 Grill and Railing	270.0	26-02-26	12-12-26																																																												
VMS.3.6.4 Tils Work	210.0	08-06-26	03-01-27																																																												
Wall Tiles Work (Bath, Kitchen and Other)	180.0	08-06-26	04-12-26																																																												
General Floor Tiles/ Marble Works	210.0	08-06-26	03-01-27																																																												
Floor Tiles Works (Bath and Kitchen)	180.0	23-06-26	19-12-26																																																												
VMS.3.6.5 Door and Window Works	216.0	17-07-26	18-02-27																																																												
VMS.3.6.5.1 Door Frame Fixing	112.0	17-07-26	05-11-26																																																												
1st Floor	7.0	17-07-26	23-07-26																																																												
2nd Floor	7.0	27-07-26	02-08-26																																																												
3rd Floor	7.0	27-07-26	02-08-26																																																												
4th Floor	7.0	27-07-26	02-08-26																																																												
5th Floor	7.0	06-08-26	12-08-26																																																												
6th Floor	7.0	06-08-26	12-08-26																																																												
7th Floor	7.0	06-08-26	12-08-26																																																												
8th Floor	7.0	16-08-26	22-08-26																																																												
9th Floor	7.0	16-08-26	22-08-26																																																												
10th Floor	7.0	16-08-26	22-08-26																																																												
11th Floor	7.0	26-08-26	01-09-26																																																												
12th Floor	7.0	26-08-26	01-09-26																																																												
13th Floor	7.0	26-08-26	01-09-26																																																												
14th Floor	7.0	05-09-26	11-09-26																																																												



█ Actual Level of Effort
 █ Actual Work
 █ Critical Remaining Work
█ Primary Baseline
 █ Remaining Work
 ◆ Milestone

