



MONTHLY PROGRESS REPORT

From 1-November-2024 to 23-November-2024

Project Code:	31	Name:	New Hope Agrotech-Munshiganj
Client:	New Hope Agrotech BD Ltd.	Contractor:	Sarker Steel Ltd.

Monthly Progress

WBS	Task	Total Qty	Upto Last Month(%)	This Month(%)	Total Done(%)	Schedule Start	Schedule Finish	Actual Finish
04.01	Excavation	1982m3	98	2	100	08-10-24	06-11-24	02-11-24
04.02	Pile head breaking	79nos	96	4	100	10-10-24	08-11-24	02-11-24
04.03.2	Pile Cap-Re-bar Work	19nos	63	37	100	19-10-24	12-11-24	04-11-24
04.03.3	Pile Cap-Brick Shuttering	19nos	89	11	100	20-10-24	13-11-24	03-11-24
04.03.4	Pile Cap-Concreting	19nos	79	21	100	22-10-24	15-11-24	04-11-24
04.04.4	Raft-Re-bar Work	3nos	82	18	100	12-11-24	15-11-24	06-11-24
04.04.7	Raft-Concreting	3nos	66	34	100	15-11-24	15-11-24	06-11-24
04.04.8	Bracing Beam	7 gap	16	84	100	09-11-24	15-11-24	03-11-24
04.05	Short Column	21nos	11	89	100	25-10-24	18-11-24	12-11-24
04.06	Basement Wall	3nos	12	88	100	30-10-24	18-11-24	16-11-24
04.07	Back filling	1982m3	7	33	40	27-10-24	20-11-24	08-11-24
04.08	Anchor Bolt setting	84nos	0	100	100	09-11-24	18-11-24	18-11-24
04.09	Foundation Beam	32gap	0	100	100	07-11-24	21-11-24	18-11-24
04.11	Foundation (Tank) Slab	139m2	0	26	26	19-11-24	28-11-24	23-11-24
04.14	Embedded Steel Parts	1740kg	0	50	50	21-11-24	28-11-24	21-11-24
04.15	Tank wall water proofing membrain-SBS	195m2	0	43	43	17-11-24	19-11-24	23-11-24
05.01	Steel-Shop Drawing	0	70	30	100	15-10-24	14-11-24	19-11-24
05.02	Shop drawing Approval	0	0	100	100	14-11-24	21-11-24	21-11-24
05.03.1	Production-1st Floor	55ton	0	90	90	21-11-24	29-11-24	02-11-24

Site Photographs



Bracing beam- Column shuttering on 01-11-24

Site Description

Site Instruction



Column concreting on 01-11-24



Pile head breaking on 02-11-24

Site Description

Site Instruction



Bracing beam concreting on 02-11-24



Wall re-bar work on 03-11-24

Site Description

Site Instruction



Pile cap concreting on 03-11-24



Pile cap Concreting on 04-11-24

Site Description

Site Instruction



Column concreting on 04-11-24



Earth loading for backfilling on 05-11-24

Site Description

Site Instruction



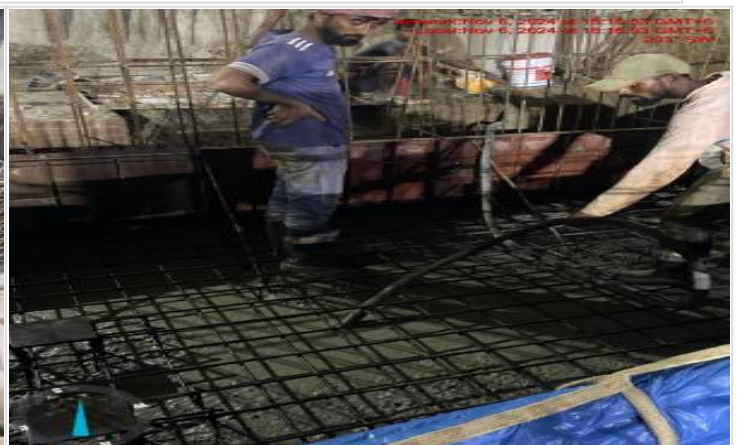
Column shuttering on 05-11-24



Wall shuttering on 06-11-24

Site Description

Site Instruction



on 06-11-24

Tank base concreting



Wall shuttering on 07-11-24

Site Description

Site Instruction



Column re-bar work on 07-11-24



Backfilling on 08-11-24

Site Description

Site Instruction



Foundation beam rebar work on 08-11-24



Wall shuttering on 09-11-24

Site Description

Site Instruction



Foundation beam rebar inspection on 09-11-24

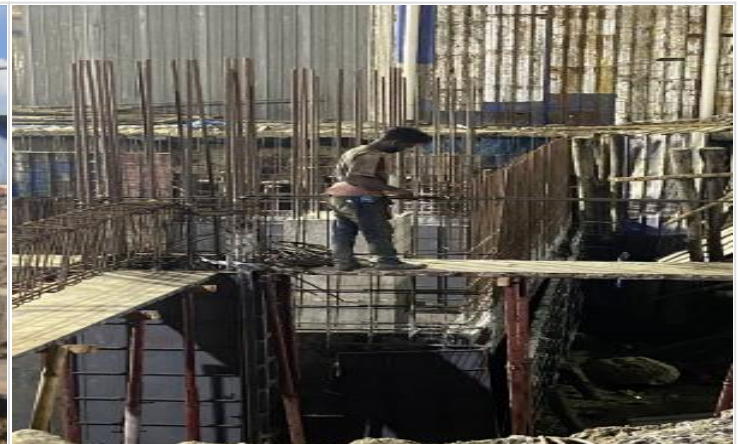


Foundation beam rebar work on 10-11-24

Wall concreting on 10-11-24

Site Description

Site Instruction



Foundation beam shuttering on 11-11-24

Foundation beam rebar work on 11-11-24

Site Description

Site Instruction



Foundation beam inspection before concrete on 12-11-24

Foundation beam concreting on 12-11-24

Site Description

Site Instruction



Anchor bolt setting on 13-11-24

Foundation beam concreting on 13-11-24

Site Description

Site Instruction



Wall shuttering on 14-11-24

Wall shuttering on 14-11-24

Site Description

Site Instruction



Wall shuttering on 15-11-24

Foundation beam rebar work on 15-11-24

Site Description

Site Instruction



Wall concreting on 16-11-24

Site Description

Site Instruction



Foundation beam concreting on 16-11-24



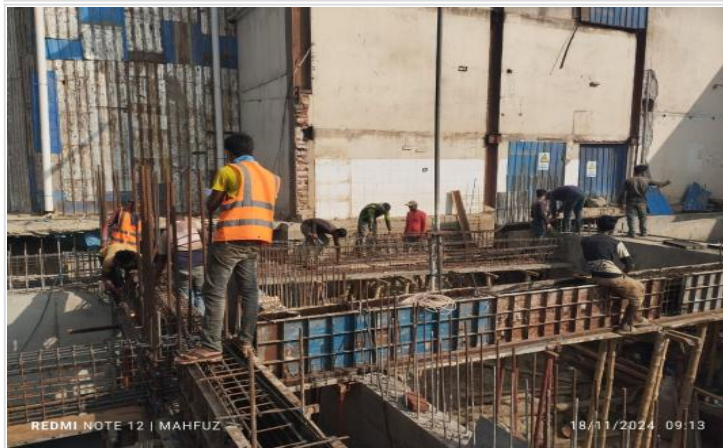
Foundation beam bottom shuttering on 17-11-24

Site Description

Site Instruction



Foundation beam rebar work on 17-11-24



Anchor bolt setting on 18-11-24

Site Description

Site Instruction



Foundation beam concreting on 18-11-24



Tank slab shuttering on 19-11-24

Site Description

Site Instruction



Tank slab shuttering on 19-11-24



Tank slab shuttering on 20-11-24

Site Description

Site Instruction



Tank slab shuttering on 20-11-24



Embedded steel parts mobilized on 21-11-24

Site Description

Site Instruction



Tank slab shuttering on 21-11-24



Tank slab shuttering on 22-11-24

Tank wall water proofing membrain SBS fi on 22-11-24

Site Desription

Site Instruction



Tank wall stylo foam fixing on 23-11-24

Tank slab re-bar fixing on 23-11-24

Site Desription

Site Instruction

Entry by:

Generated by:

Planning Engineer

www.bel3c.com, Developed by: Engr. Md. Sanaul Haque