



# MONTHLY PROGRESS REPORT

From 1-April-2023 to 29-April-2023

Project Code:	62	Name:	Cityscape Tower Col Beam Ext-L-14-17
Client:	Cityscape	Contractor:	Cityscape International Ltd.

## Monthly Progress

WBS	Task	Total Qty	Upto Last Month(%)	This Month(%)	Total Done(%)	Schedule Start	Schedule Finish	Actual Finish
2.1.02	L-16-Podema Board removin	1sum	90	10	100	27-03-23	31-03-23	09-04-23
2.1.05	L-16-Col Beam Ext-Re-bar Fabricat	1sum	0	100	100	06-04-23	10-04-23	18-04-23
2.1.06	L-16-Col Beam Ext-Shutterin	1sum	0	100	100	11-04-23	13-04-23	18-04-23
2.1.07	L-16-Col Beam Ext-Concretin	1sum	0	100	100	14-04-23	14-04-23	19-04-23
2.1.09	L-16-Drop Wall-Shuttering	1sum	0	5	5	30-04-23	06-05-23	29-04-23

## Site Photographs



L-16-Column Stirrups making on 01-04-23

Site Description

Site Instruction



L-16-Scaffolding on 01-04-23



L-16-Column Stirrups making on 02-04-23

Site Description

Site Instruction



L-16-Re-bar fixing on 02-04-23



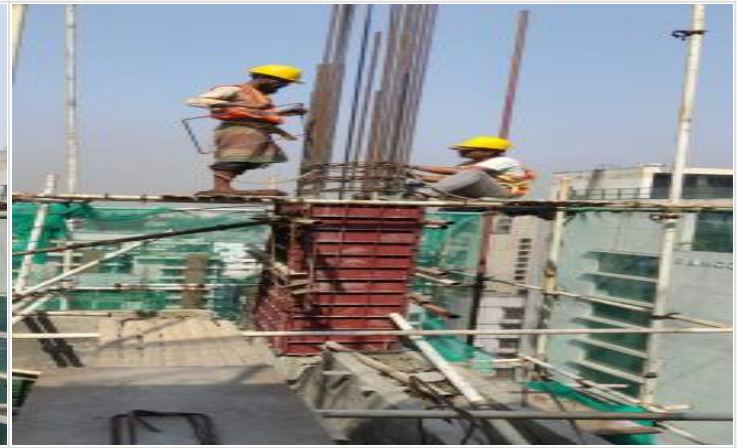
L-16-Column Re-bar on 05-04-23

Site Description

Site Instruction



L-16-Column concrete mixing on 05-04-23



L-16-Column Shuttering on 09-04-23

L-16-Column Re-bar Work on 09-04-23

Site Description

Site Instruction



L-16-Column shuttering on 11-04-23

L-16-Column concreting on 11-04-23

Site Description

Site Instruction



L-16-Column shuttering on 13-04-23

L-16-Column concreting on 13-04-23

Site Description

Site Instruction



L-16-Beam bottom shuttering on 15-04-23

Site Description

Site Instruction



L-16-Beam Re-bar fabrication on 15-04-23



L-16-Beam shuttering on 18-04-23

Site Description

Site Instruction



L-16-Beam shuttering on 18-04-23



L-16-Column curing chemical applying on 19-04-23

Site Description

Site Instruction



L-16-Beam concreting complete on 19-04-23



L-16-Beam Shutter removing on 29-04-23

L-16-Drop Wall Shuttering on 29-04-23

Site Description

Work stopped 21-28 Apr due to Eid Vacation

Site Instruction

Entry by:

Planning Engineer

Generated by:

www.bel3c.com, Developed by: Engr. Md. Sanaul Haque